



01

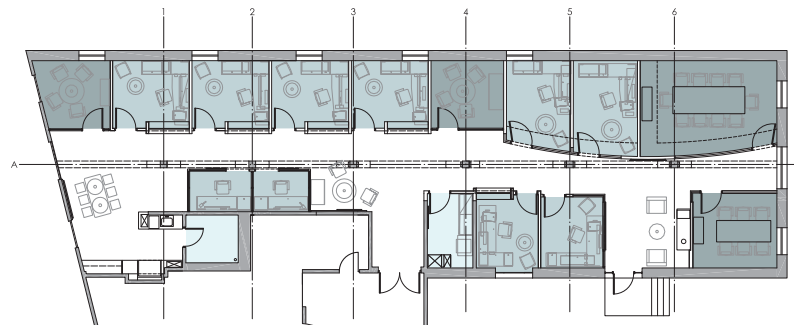
- 01 view of lobby and main conference room
- 02 view of private office "jewel boxes" and touch-down meeting space
- 03 floor plan

2013 | **signature financial king building**

Signature's office was designed to continue their collaborative and classically forward brand. The 3,200 SF suite in the historic King Building was selected to provide a memorable space reflective of the character of the Charlottesville region. The challenge of the small space was addressed by providing transparency throughout the space, exposing the heavy timber construction and opening up the ceiling to expose the wood joists. The hallway was designed to create a jewel box view into each of the offices to promote transparency to the staff while allowing shared light into the hallway. Glass enclaves provide additional touchdown offices in the hallway to provide flexibility in staffing locations while maintaining an open view. Various types of meeting spaces were designed to accommodate group sizes as well as privacy needs. The finish palette with its richly colored textiles and the natural materials of the exposed space convey a modern elegance while representing the context of the region.



02



03